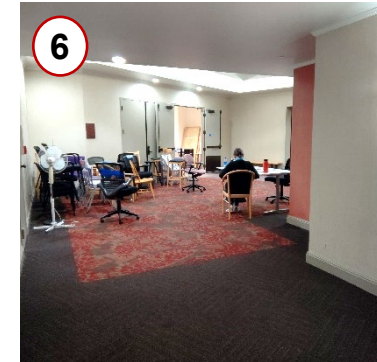
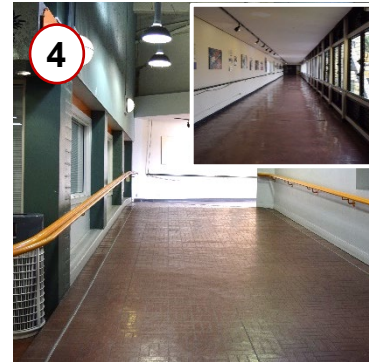


- 1 Park near the entry of Dole Cannery (650 Iwilei Road)
- 2 Take the escalator or stairs to the 2nd floor
- 3 Walk straight and turn RIGHT to proceed through the glass doors
- 4 Turn LEFT and proceed down the hall. Walk up the ramp to access the skywalk
- 5 Go through double glass doors and turn LEFT
- 6 Ballet Hawaii will be on your LEFT



DOLE PARKING LOT (SKYWALK)

SKYWALK

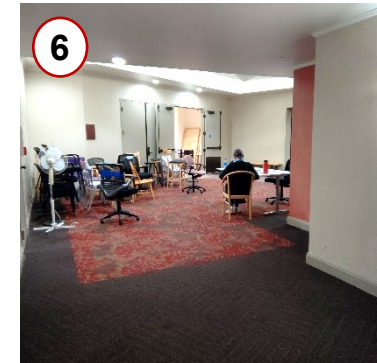
- Closes daily at 6:30 pm (closed on weekends)

DOLE CANNERY PARKING LOT

- 2.5 maximum parking before 2 p.m. After 2 p.m., no maximum time limit
- No time limit on weekends
- Back green gates closes at 6:30 p.m.



- 1 Park near the entry of Dole Cannery (650 Iwilei Road)
- 2 Walk straight and go through the glass doors on your RIGHT
- 3 Walk at a diagonal direction to the glass doors on the opposite side of the building
- 4 Cross the street utilizing the crosswalk
- 5 Take the elevator to the 2nd floor and walk through the double solid doors and turn RIGHT
- 6 Ballet Hawaii will be on your LEFT



DOLE PARKING LOT (ALTERNATE)

SKYWALK

- Closes daily at 6:30 pm (closed on weekends)

DOLE CANNERY PARKING LOT

- 2.5 maximum parking before 2 p.m. After 2 p.m., no maximum time limit
- No time limit on weekends
- Back green gates closes at 6:30 p.m.





PARKING GARAGE DRIVE THRU

- Parking booth attended

Monday – Friday
7:00 am – 8:00 pm

Saturday - Sunday
11:00 am – 8:00 pm

- No parking in Drive Thru area at any time

- 1 Enter from Pacific Street and pull ticket to enter parking garage
- 2 Take elevator/stairs to the 2nd floor and walk through the 2 double solid doors and turn RIGHT
- 3 Go through the double glass doors and walk down the hallway
- 4 Ballet Hawaii will be on your LEFT

BALLET HAWAII

735 Iwilei Road

(Former Pōmaika'i Ballrooms - Dole Cannery)

**2 HOUR VALIDATED
PARKING OFFERED AT
\$2.00 RATE**



2nd Floor

